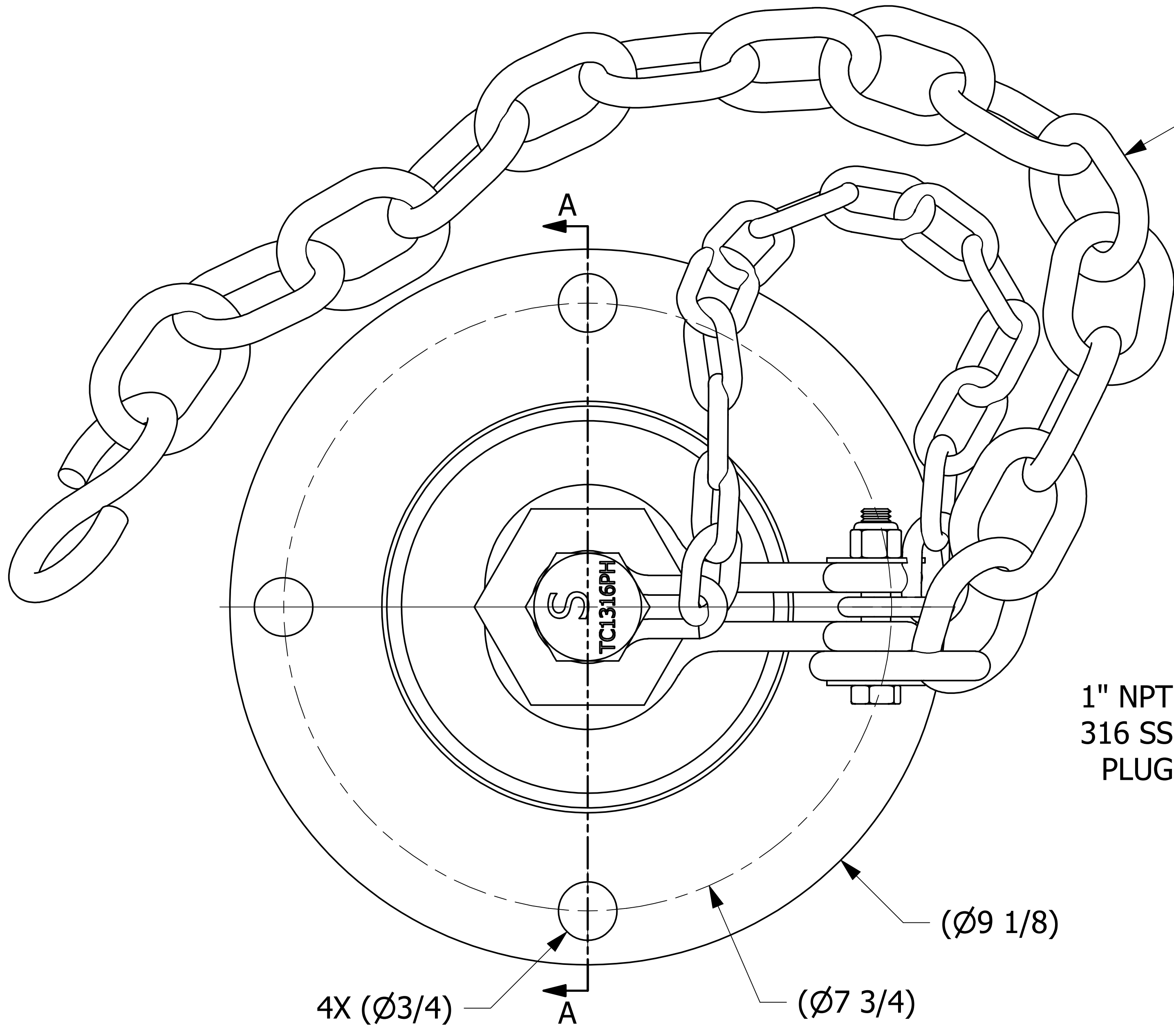


SALES DRAWING SALES DRAWING

SALES DRAWING SALES DRAWING



15 LINKS OF 3/8" 18-8 SS CHAIN  
APPROXIMATE LENGTH IS 21"

1" NPT  
316 SS  
PLUG

4-4 UNC - 2B

4-4 UNC - 2A

3" CAM  
GROOVE

SECTION A-A

(5/8)  
(3/16)

- NOTES:
1. AAR APPROVAL# E-149523.
  2. GASKETS MATERIAL: BLACK VITON A.
  3. FITS UNION TANK 4" BALL VALVE (7.75" BC).
  4. APPROXIMATE HEIGHT = 9".
  5. THIS ASSEMBLY IS AAR AND DOT APPROVED.
  6. QUICK CONNECT MEETS A-A-59326D.
  7. CAP MATERIAL: 416 SS.
  8. FLANGE MATERIAL: 316 SS.

C	RJP	3-4-16	UPDATED TE3S416DC6A GEOMETRY
B	WEB	4-8-15	A-A-59326D WAS MIL-C-27487G, E-149523# WAS E-049013, UPDATED TITLEBLOCK
A	CHL	8-16-07	NEW PART ADDED TO SYSTEM
REV	BY	DATE	DESCRIPTION

<small>UNLESS OTHERWISE SPECIFIED DIMENSIONAL TOLERANCES</small> FRACTIONAL: ±1/16 X.XX: ±.03 X.XXX: ±.015 ANGULAR: ±1° DEBURR ALL SHARP EDGES. ALL MACHINED SURFACES TO HAVE A 125 RMS FINISH UNLESS NOTED OTHERWISE. <small>THIRD ANGLE PROJECTION</small>	DRAWN BY:	ACC
	CHECKED BY:	
	PROTOTYPE BY:	ACC
	PROTOTYPE DATE:	1/16/2006
	APPROVED FOR PRODUCTION BY:	PJG
PRODUCTION DATE:	8/16/2007	

**SALCO PRODUCTS, INC.**

**QUICK CONNECT 3" FLANGED**

MATERIAL: **SEE NOTES**

PROJECT #: **WAG0294** SHEET #: **1 OF 1** SCALE: **1:1**

DRAWING #: **D21466** PART #: **TE4X3S416SFUT6A**

THIS PRINT, PROPERTY OF SALCO PRODUCTS INC. CONTAINS PROPRIETARY INFORMATION AND MUST NOT BE COPIED, REPRODUCED, OR USED DETRIMENTALLY TO OUR INTEREST.